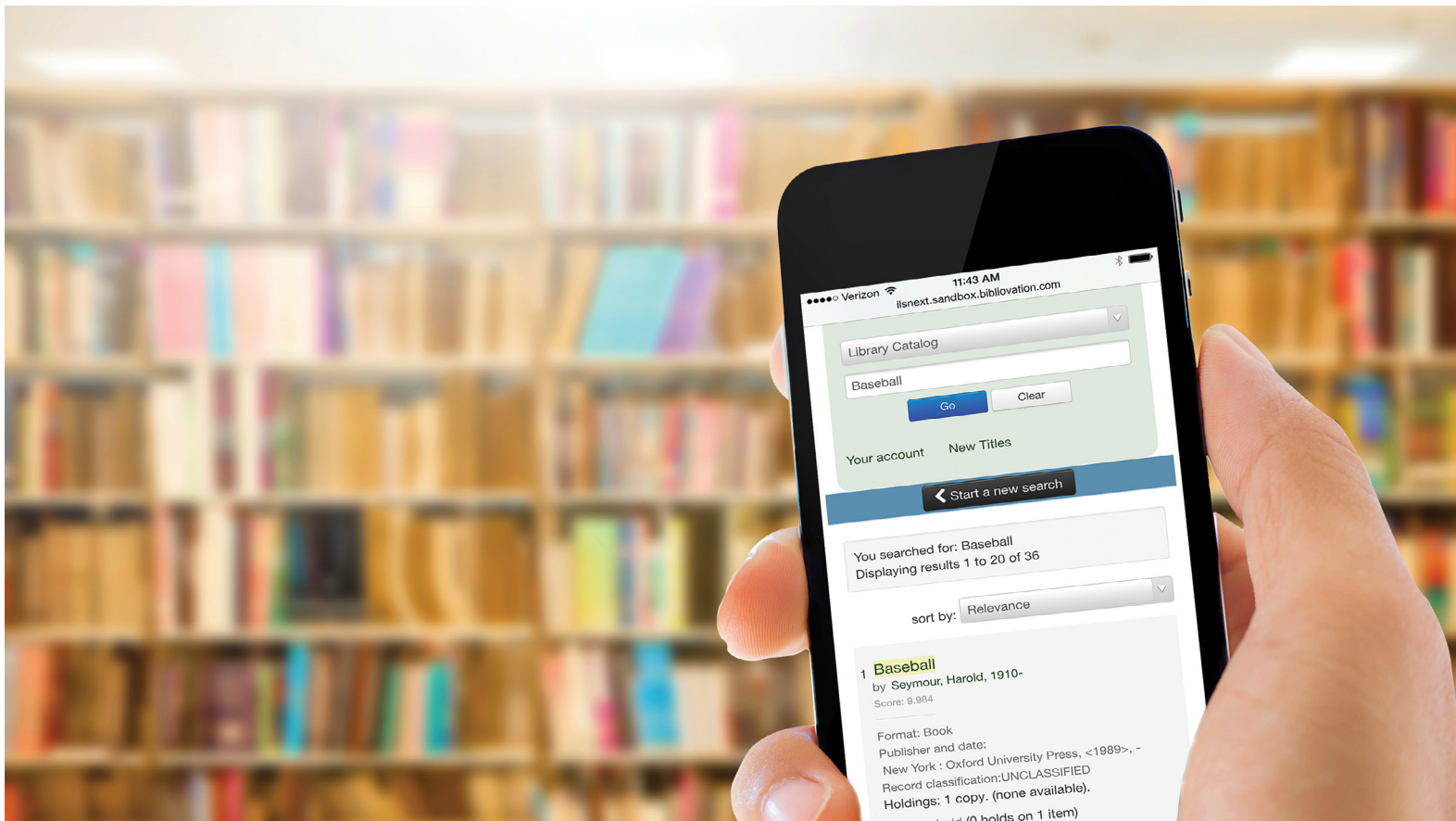


Bibliovation™



“Bibliovation™ functionality and intuitiveness are light years ahead of the system we are replacing.”

– An Intelligence Community Federal Government Librarian

One simple to use, powerful search tool that reaches your library's full universe of physical and digital assets to retrieve relevant search results. The user experience transforms from the frustration of multiple database searches with search rules and different search results lists, to the satisfaction of a single search that combines relevant results from unified indexes, independent databases, library catalogs, and local digital collections.

Bibliovention at a Glance

Overview

The Bibliovention Library Services Platform (LSP) is a highly flexible, unified software system offered as a SaaS solution. The entire platform is 100% web-based, providing mobile access from all devices. Bibliovention uses relational databases storing all data types, including bibliographic, patron, transaction, acquisitions, and digital objects. By design, Bibliovention is highly customizable to support a variety of different library workflows. Users can select individual system components (i.e., Acquisitions and Discovery Layer to be used only to complement an existing ILS), or the entire suite of services can be provided to create the complete platform. MARC records, as well as other flexible metadata formats, are created as part of the digital object import process.

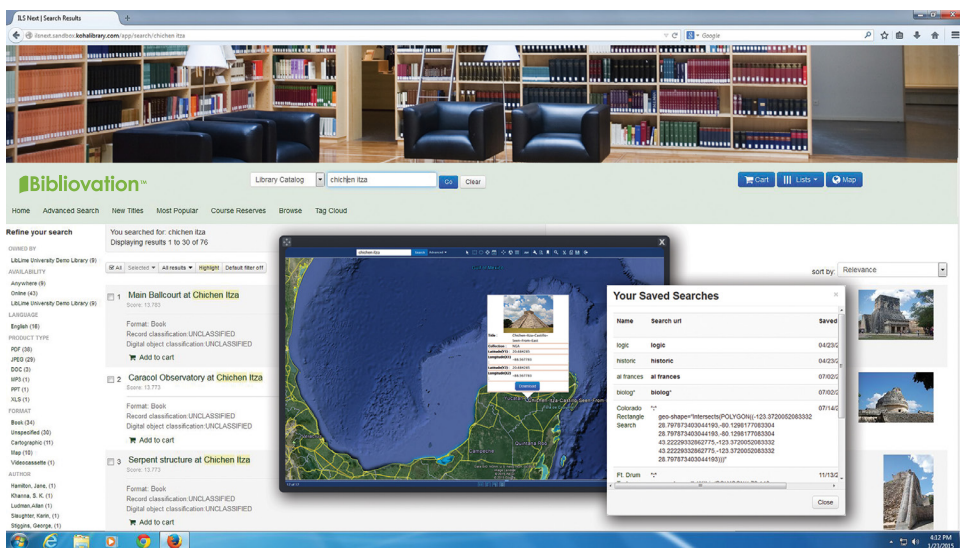
How Bibliovention Works

Our customers include librarians from many different backgrounds – they have different workflows, different missions, different user communities, and different external resources. LibLime works closely with individual or groups of sites to develop requirements for new functionality or enhancements to existing functionality. The librarians participate in all steps of the design process -- feature identification, design description, specification approval, alpha testing, beta testing, and final production deployment. Bibliovention has been developed by librarians for librarians as an open development platform with a very active user community. This process is better than the closed proprietary model used for the last 30 years. Designed **By Librarians and Used By Librarians!**

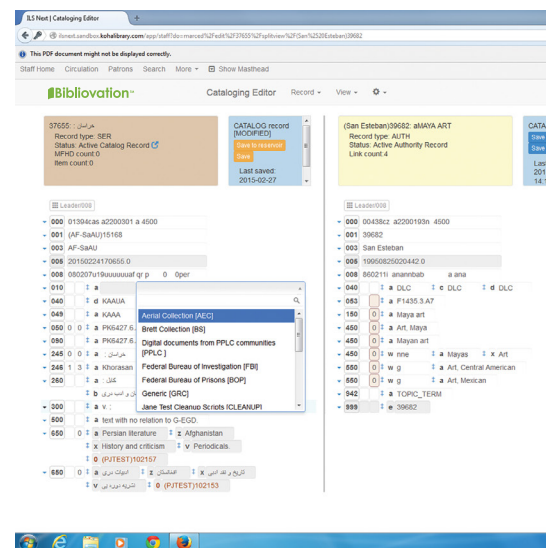
Bibliovention Tools and Functionality

Unique features and benefits of Bibliovention include:

- API driven Discovery Layer
- Fully integrated digital content management module
- Full-text searching of digital documents
- Relevancy ranking in the Discovery Layer delivers best results first
- Dynamic and rich contextual faceted search options
- Enriched content support, and eBook integration
- Esri and Google Maps search interfaces support GeoMARC cataloging for visual retrieval
- Multi-language search translation
- ILL requests, purchase requests and reference requests
- Saved searches and alerts for new materials
- Record tagging, ratings, reviews, and personal list creation
- Self-checkout and Self-renewal
- Digital object downloads
- Mobile device support
- Suspend/reactivate holds, recall materials and e-call slips



API driven Discovery Layer



MARC21-based Cataloging Editor

Additional Bibliovation features include:

Web-based Circulation

- 'Green' holds algorithm
- Patron record ownership for union catalogs
- Agency based multiple circulation policies for union catalogs
- Patron messaging options (RSS feeds, email, lists, and pop-ups)
- Course reserves
- Parent/child record relationships with support for proxy borrowing
- LDAP/ registrar services / automatic patron record creation
- ILL request tracker, holds management with pass/trace for union catalogs
- Batch delete of unused patron records
- Message creation dashboard

Web-based MARC21-based Cataloging Editor

- Full MARC21 support and record templates for bibs, authorities and holdings
- LC MARC21 validation rules with support for local cataloging rules (with embedded local validation)
- Record cloning and multiple record display
- Batch delete/edit with support for cut/paste between records
- Authority control for multiple thesauri
- Z39 search from Cataloging Editor
- Reservoir workspace
- Batch import with matching profiles and data field deletion
- Digital document management administration
- Site-defined terminology picklists applicable throughout the MARC record

Web-based Serials Control

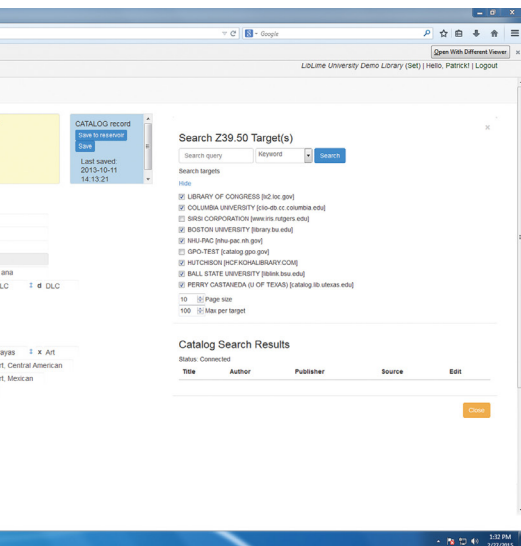
- Support for the MARC format for holdings
- Central ordering and distribution
- Multiple subscription support and flexible routing slips
- EDI claiming through acquisitions
- Full support for enumeration and chronology
- Holds for specific issue support

Web-based Acquisitions

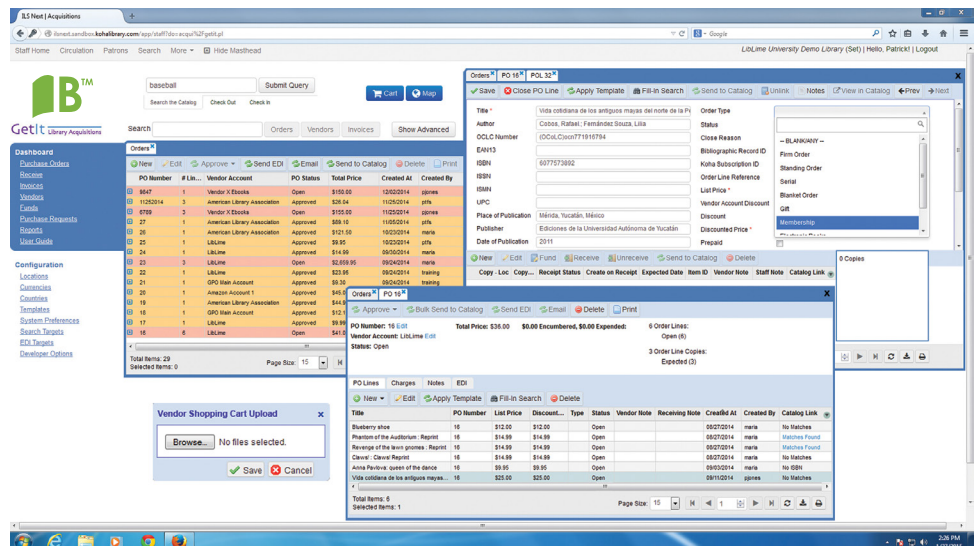
- Enhanced EDI support with EDI claiming
- Unlimited PO lines per PO and purchase requests tracker
- Controlling and managing funds hierarchy
- Vendor shopping cart upload and Z39 searching
- Invoice rectification
- 'Send to catalog' feature for 'On Order' display
- Support for multi-FY funding with FY fund hierarchy auto-rollover
- Support for Firm Orders, Standing Orders, Blanket Orders, and Serial Orders

Web-based System Administration

- Discovery Layer Configuration Editor
- SQL query creator with saved queries and ODBC access
- Community sharing of reports
- Staff permissions (roles and individual accounts)
- Batch record export and batch patron import
- Label printing, message manager and email messaging support
- Z39 search target management
- System preferences controlling workflow functions
- Security - modification log viewer



MARC21-based Cataloging Editor



EDI Compliant Acquisitions Ordering

LibLime Services



LibLime provides a number of essential services to libraries and librarians around the world. These services complement our Bibliovation™ LSP and the independent components that comprise that platform.

Consulting

- LibLime librarians and technical business analysts partner with libraries to help define additional functionality for Bibliovation
- Perform comparative software analyses of Bibliovation functionality and proprietary ILS applications
- Perform design specifications for new open development functionality
- Perform design specifications for enhancing existing Bibliovation functionality

Development

- Perl, Java, Javascript, CGI, CSS, and HTML programming expertise
- New functionality development
- Existing functionality enhancement
- Design specifications, release notes and user documentation services
- Feature design testing, feature regression testing and user testing

Implementation

- Installation (includes Debian or RHEL, MySQL or Postgres RDBMS, web server, Plack, Solr, and ILS application)
- Dedicated Project Managers
- System level configuration
- Module level configuration (permissions, policies, privileges, and import settings)
- Migration of data from legacy system – bibliographic, item, patron, authority, and circulation transaction records
- Union catalog creation
- Web-based training

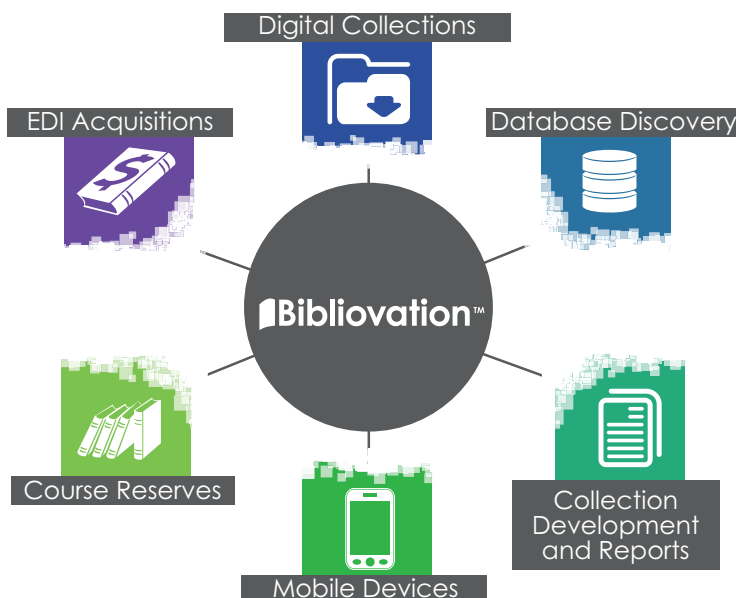
Consumer Support and Hosting

- Distributed computing hosting platform applies computing resources at point of need
- Customer support via customer web portal
- Daily full system backups and logical data backups every 5 hours
- Every site has a production, test and replica database for reporting
- FedRAMP certification for IaaS and PaaS

About LibLime

LibLime is the pioneer of web-based, cloud-hosted library management services. Our Library Services Platform, Bibliovation, combines traditional bibliographic management services with support for GeoMARC, RDA, digital content searching, and visual retrieval. Working closely with our library customers, we are able to provide the most relevant technology tools in the Bibliovation platform – this is a solution built **By Librarians For Librarians**.

Get the Power.



Connect with us   

1801 Research Blvd., Suite 310
Rockville, MD 20850
(301) 654-8088

www.liblime.com

